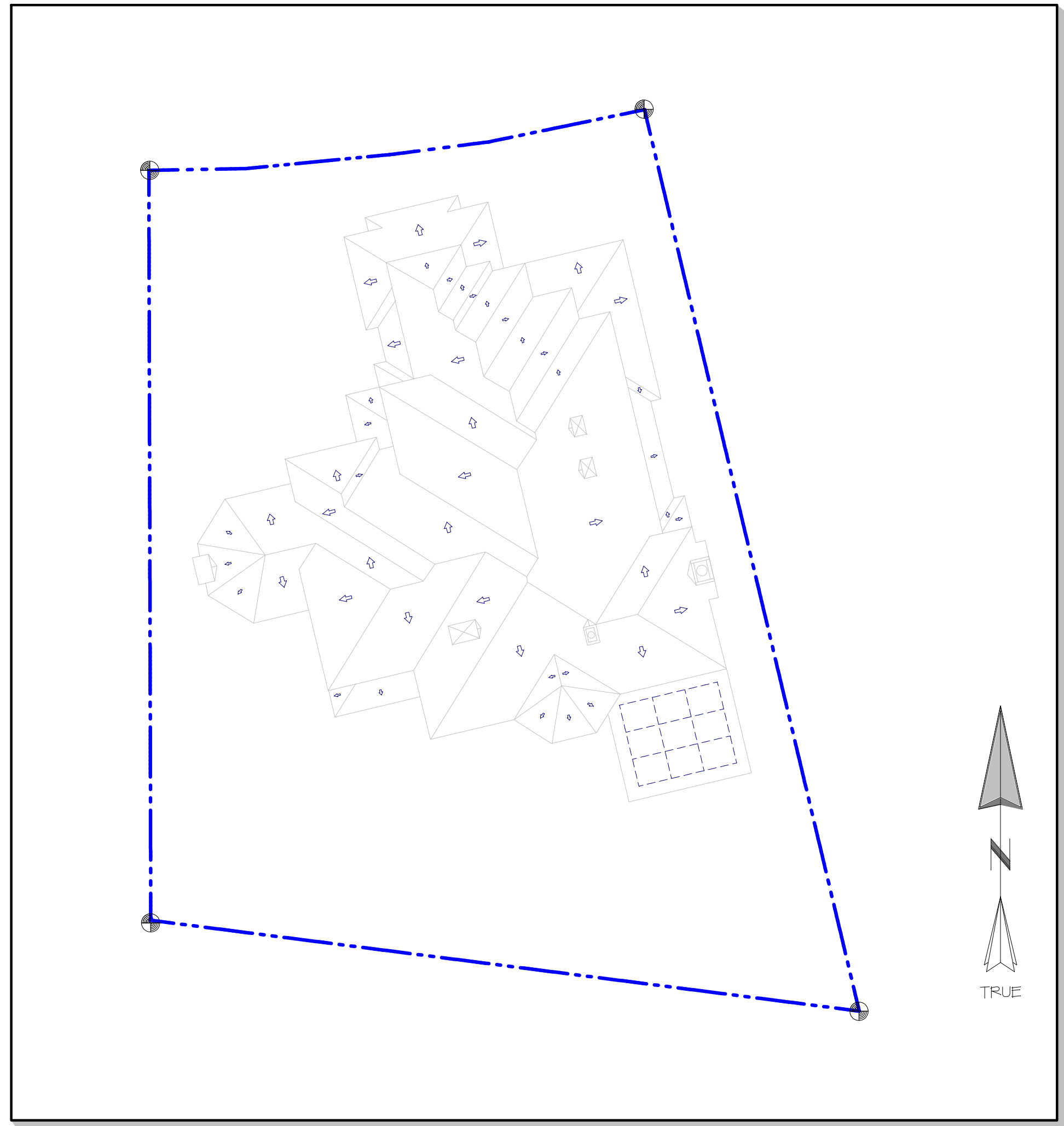


RESIDENCE

KITCHEN / GREAT ROOM

INTERIOR REMODEL



Site / Roof Plan

1/16" = 1'-0"

BUILDING FLOOR AREAS

LIVABLE SPACE

BLDG LEVEL	EXISTING FT ²	NEW FT ²	TOTAL FT ²
• Main	2,525	Ø	2,525
• Upper	2,381	Ø	2,381
• TOTAL (Livable)	4,906	Ø	4,906

NON-LIVABLE SPACE

DESCRIPTION	EXISTING FT ²	NEW FT ²	TOTAL FT ²
• Garage	1,060	Ø	1,060
• Decks / Accessory	342	Ø	342
• TOTAL (Non-Livable)	1,402	Ø	1,402

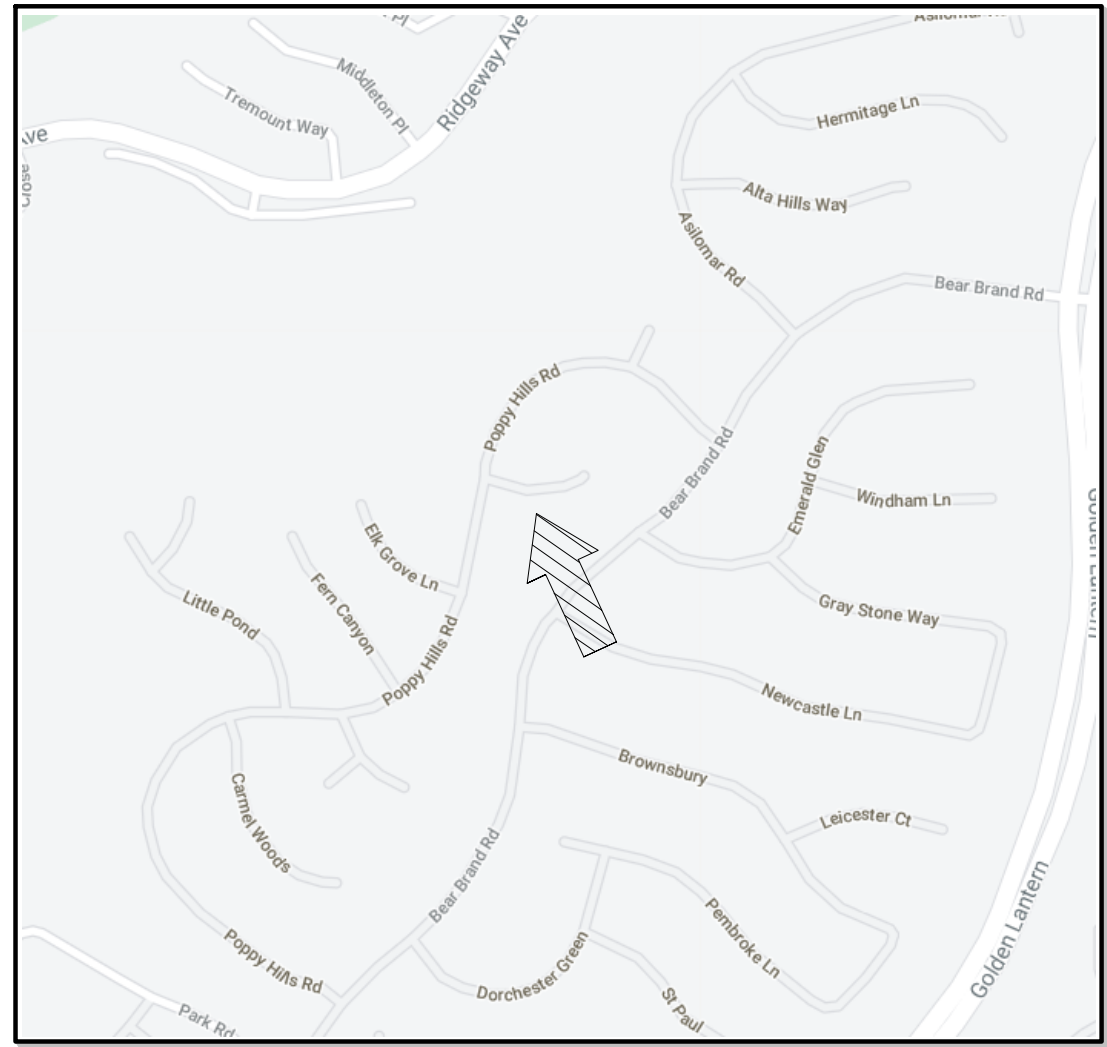
TOTAL SPACE

DESCRIPTION	EXISTING FT ²	NEW FT ²	TOTAL FT ²
• TOTAL	6,308	Ø	6,308

PROJECT SCOPE OF WORK

- 1) Demo Existing Interior Stud Walls (Shearwall) in Kitchen and Exterior Door and Shearwalls on Main Level
- 2) New Footings and In-Fill Floor Slab on Main Level
- 3) Reframe Interior Shearwall and Add Exterior Moment Frame
- 4) Construct (N) Floor Beam Above Great Room
- 5) Construct (N) Kitchen Cabs, Counters, and Appliances

B → Per AQMD Rule 1403:
Provide Asbestos Testing of Existing
Architectural Finishes and Cavity Fillers
Prior to Full Demolition of Affected Areas.



VICINITY MAP

No Scale

PROPERTY LEGAL DESCRIPTION



- Construction Type: V-B ← **B**
- Occupancy Classification: R-3
- HOA: Ocean Ranch at Bear Brand

PROJECT CONSULTANT

- Architectural: BLUE WATER Engineering Corp.
- Structural: **B**



CODES & COMPLIANCE

- BUILDING: 2019 California Building Code (CBC)
- ELECTRICAL: 2019 California Electrical Code (CEC)
- PLUMBING: 2019 California Plumbing Code (CPC)
- ENERGY: 2019 California Building Energy Efficiency Standards

PROJECT TABLE OF CONTENTS: SUBMITTALS & REVISIONS						
Sheet No.	Sheet Title	A	B			
T1	Project Title Sheet	✓	✓			
A1.1	As-Built Plan: First Level	✓	✓			
A1.2	As-Built Plan: 2nd Level	✓	✓			
A2.1	Proposed Interior Remodel Plan	✓	✓			
A2.2	South Elevation: As-Built & Proposed	✓	✓			
E1.1	Proposed Electrical Plan		✓			
SN1.1	Structural Notes and Material Specifications	✓	✓			
SN1.2	Structural Notes and Material Specifications	✓	✓			
S1.1	Structural Foundation Plan	✓	✓			
S2.1	Structural Floor Framing Plan	✓	✓			
SD2.1	Structural Details - Foundation	✓	✓			
SD2.2	Structural Details - Framing	✓	✓			
SD2.3	Structural Details - Framing	✓	✓			

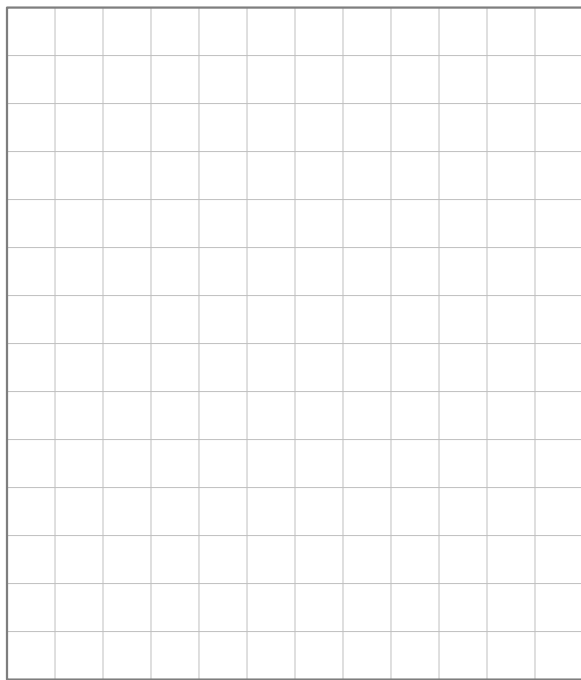
A Identify's sheet changes from previous release

INTERIOR
REMODEL

BLUE WATER
ENGINEERING CORP.

Consulting Structural Engineering & Design

www.STRUCTURAL.tel

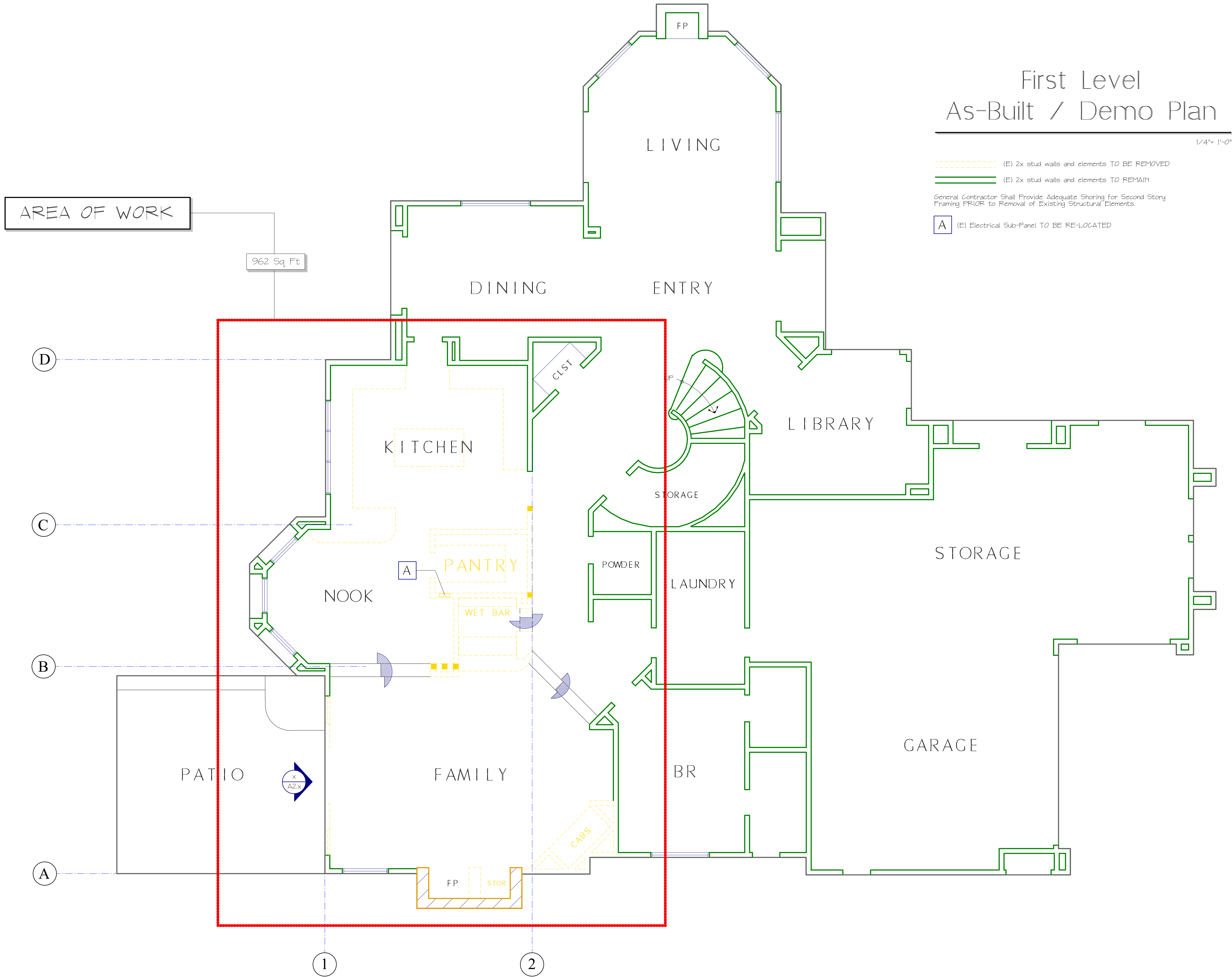


DRAWING ISSUES AND REVISIONS			
CHK	DATE	DESCRIPTION	BY
A	1/12/22	Building Dept Submittal	ROZ
B	4/05/22	Plan Check Corrections	ROZ



BLUE WATER Project Number 21032
Designer SAB
Engineer ROZ
Scale as noted

THE USE OF THESE PLANS AND SPECIFICATIONS SHALL BE RESTRICTED TO THE ORIGINAL SITE FOR WHICH THEY WERE PREPARED AND PUBLICATION THEREOF IS EXPRESSLY LIMITED TO SUCH USE. FEDERAL COPYRIGHT LAW PROHIBITS THE REPRODUCTION, DISPLAY, SALE OR OTHER DISPOSITION OF THIS DOCUMENT WITHOUT THE EXPRESS WRITTEN CONSENT OF BLUE WATER ENGINEERING CORP.

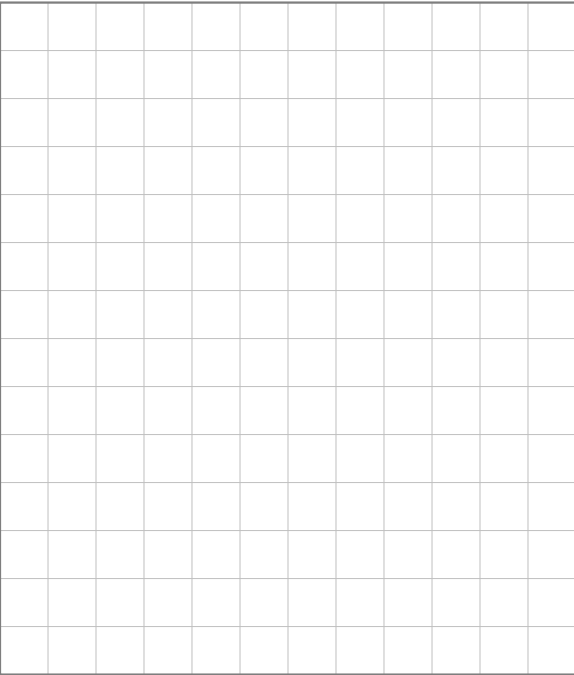


INTERIOR
REMODEL

BLUE WATER
ENGINEERING CORP.

Consulting Structural Engineering & Design
www.STRUCTURAL.tel

www.ARCHITECTURAL.tel



DRAWING ISSUES AND REVISIONS			
NO.	DATE	DESCRIPTION	BY
A	1/12/22	Building Dept Submittal	ROZ
B	4/05/22	Plan Check Corrections	ROZ

REGISTRATION AND SIGNATURE

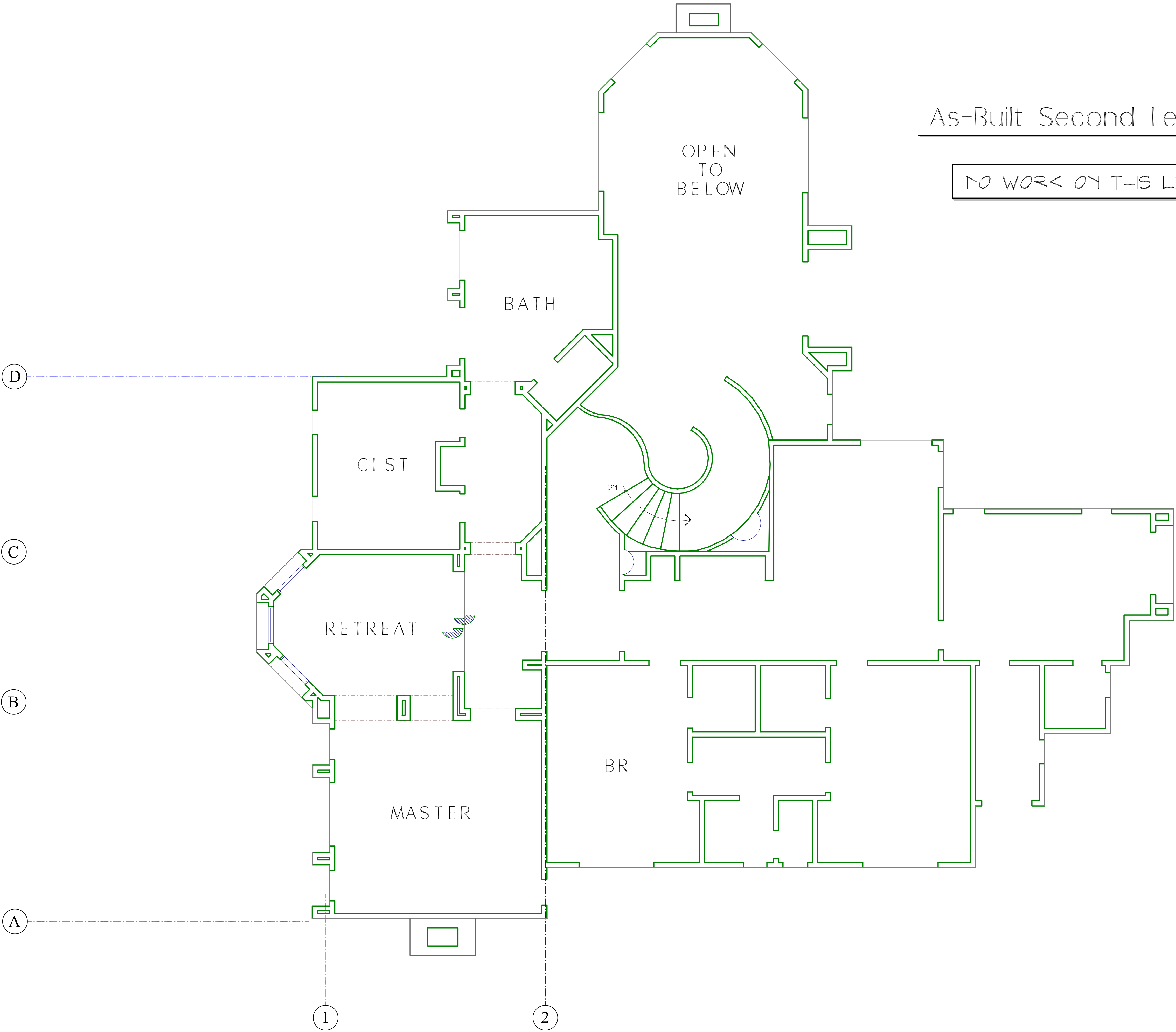
BLUE WATER Project Number 21032
Designer SAB
Engineer ROZ
Scale as noted

THE USE OF THESE PLANS AND SPECIFICATIONS SHALL BE RESTRICTED TO THE ORIGINAL SITE FOR WHICH THEY WERE PREPARED AND PUBLICATION THEREOF IS EXPRESSLY LIMITED TO SUCH USE. FEDERAL COPYRIGHT LAW PROHIBITS THE REPRODUCTION, DISPLAY, SALE OR OTHER DISPOSITION OF THIS DOCUMENT WITHOUT THE EXPRESS WRITTEN CONSENT OF BLUE WATER ENGINEERING CORP.

As-Built Second Level Plan

1/4"= 1'-0"

NO WORK ON THIS LEVEL



DRAWING ISSUES AND REVISIONS			
NO.	DATE	DESCRIPTION	BY
A	1/12/22	Building Dept Submittal	RZ
B	4/05/22	Plan Check Corrections	RZ

REGISTRATION AND SIGNATURE



BLUE WATER Project Number 21032
Designer SAB
Engineer RZ
Scale as noted

THE USE OF THESE PLANS AND SPECIFICATIONS SHALL BE RESTRICTED TO THE ORIGINAL SITE FOR WHICH THEY WERE PREPARED AND PUBLICATION THEREOF IS EXPRESSLY LIMITED TO SUCH USE. FEDERAL COPYRIGHT LAW PROHIBITS THE REPRODUCTION, DISPLAY, SALE OR OTHER DISPOSITION OF THIS DOCUMENT WITHOUT THE EXPRESS WRITTEN CONSENT OF BLUE WATER ENGINEERING CORP.

$$1/4'' = 1'' - 0''$$

-



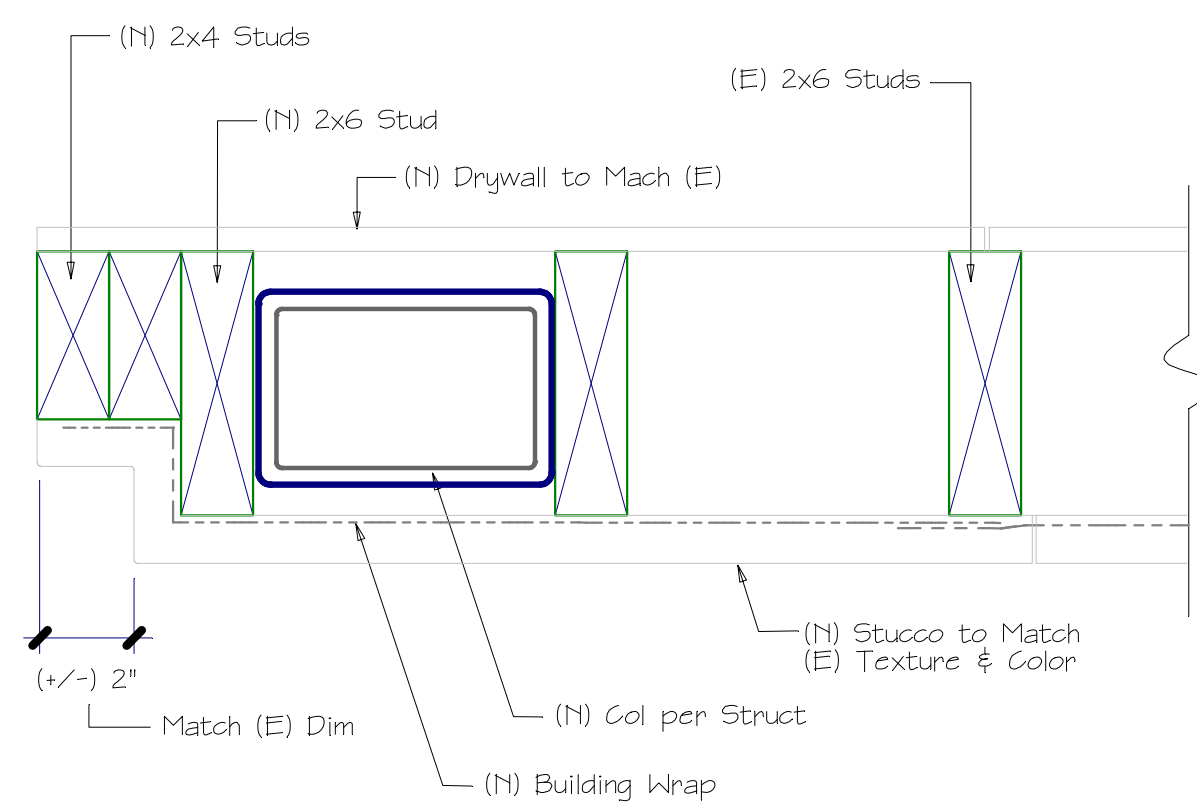
Refer to Plans by
WEEKS DESIGN
for Cabinet and
Appliance Layout
and Dimensions

[illegible]

REGISTRATION AND SIGNATURE

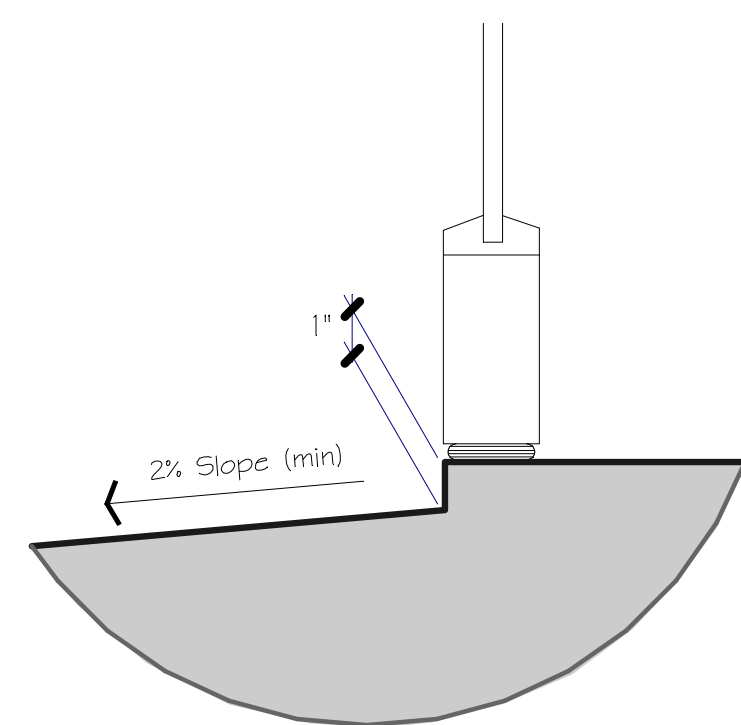
BLUE WATER Project Number	21032
Designer	SAB
Engineer	ROZ
Scale	as noted

THE USE OF THESE PLANS AND SPECIFICATIONS SHALL BE RESTRICTED TO THE ORIGINAL SITE FOR WHICH THEY WERE PREPARED AND PUBLICATION THEREOF IS EXPRESSLY LIMITED TO SUCH USE. FEDERAL COPYRIGHT LAW PROHIBITS THE REPRODUCTION, DISPLAY, SALE OR OTHER DISPOSITION OF THIS DOCUMENT WITHOUT THE EXPRESS WRITTEN CONSENT OF BLUE WATER ENGINEERING CORP.



TYPICAL DOOR JAMB

13



TRANSITION STEP AT DOOR

14



AS-BUILT PARTIAL SOUTH ELEVATION

2



PROPOSED PARTIAL SOUTH ELEVATION

2

INTERIOR REMODEL

BLUE WATER
ENGINEERING CORP.

Consulting Structural Engineering & Design

www.STRUCTURAL.tel
Consulting Structural Engineering & Design
www.ARCHITECTURAL.tel

www.STRUCTURAL.tel

[illegible]

REGISTRATION AND SIGNATURE

BLUE WATER Project Number 21032

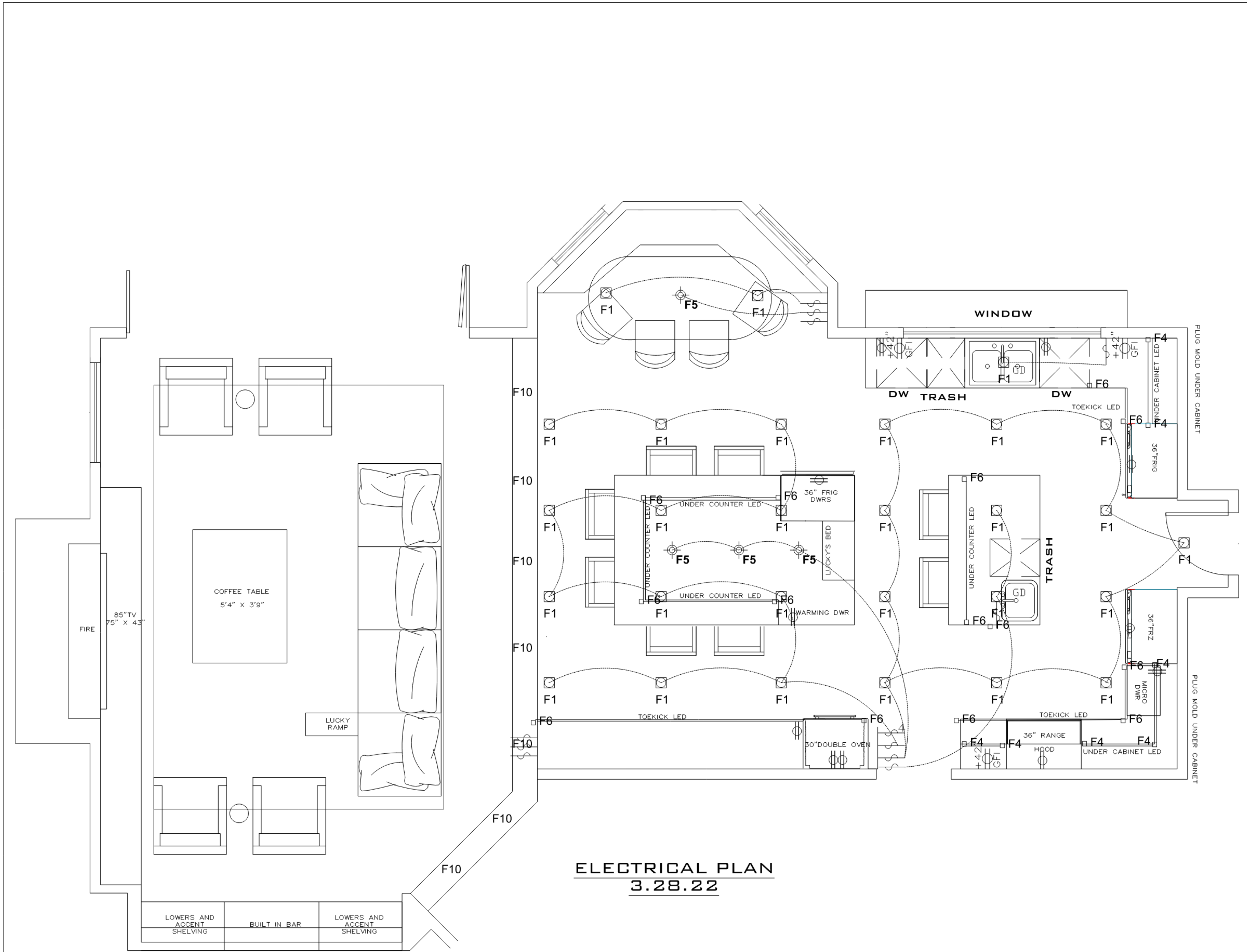
Designer	SAB
----------	-----

Engineer ROZ

Scale as noted

THE USE OF THESE PLANS AND SPECIFICATIONS SHALL BE RESTRICTED TO THE ORIGINAL SITE FOR WHICH THEY WERE PREPARED AND PUBLICATION THEREOF IS EXPRESSLY LIMITED TO SUCH USE. FEDERAL COPYRIGHT LAW PROHIBITS THE REPRODUCTION, DISPLAY, SALE OR OTHER DISPOSITION OF THIS DOCUMENT WITHOUT THE EXPRESS WRITTEN CONSENT OF BLUE WATER ENGINEERING CORP.

A2.2



- F1 RECESSED LED FIXTURE - 4" CAN - IC RATED -
USE WET LOCATION RATED AT SHOWERS AND TUBS
F2 ADJUSTABLE LED FIXTURE ON DIMMER SWITCH - 2" CAN
F3 INCANDESCENT PENDANT LIGHT FIXTURE
F4 FLOURESCENT or LED FIXTURE - UNDER CABINET
F5 INCANDESCENT WALL - MOUNTED LIGHT FIXTURE - PER OWNER/DESIGNER
F6 LED STRIP LIGHT
F7 COMBO FLOURESCENT FIXTURE WITH INTEGRATED EXHAUST FAN
F8 LED SPOT/ACCENT FIXTURE
F9 SURFACE MOUNTED FLOURESCENT UTILITY FIXTURE
F10 LED RECESSED STEP LIGHT STRIP
FE1 LED RECESSED STEP LIGHT - EXTERIOR/WET LOCATION RATED
FE2 LOW VOLTAGE UP LIGHT - EXTERIOR/WET LOCATION RATED
FE3 RECESSED LED FIXTURE - 4" CAN - EXTERIOR/WET LOCATION RATED
FE4 WALL MOUNTED FIXTURE = EXTERIOR/WET LOCATION RATED
FE5 MOTION SENSOR SPOT LIGHT MOUNTED @ HEIGHT NOTED ON PLAN
- NOTES:
LOCAL EXHAUST SYSTEM: VENT HOOD TO HAVE
A MINIMUM EXHAUST RATE OF 100CFM VENTED
TO EXTERIOR

PROVIDE POWER FOR HOOD 15 AMP 120V

PROVIDE POWER HOOKUP
FOR INDUCTION COOKTOP 50AMP 240/208VAC

PROVIDE POWER AND WATER SUPPLY FOR
FREEZER - 15 AMP SEE MANUFACTURER SPEC

PROVIDE POWER AND WATER FOR
REFRIGERATOR - 15 AMP SEE MANUFACTURE
SPEC

PROVIDE POWER FOR BEVERAGE DRAWERS-
15AMP SEE MANUFACTURE SPEC

PROVIDE POWER AND WATER FOR
DISHWASHERS - 15 AMP SEE MANUFACTURE
SPEC

PROVIDE POWER TO DOUBLE OVEN- 50AMP SEE
MANUFACTURE SPEC

PROVIDE POWER TO WARMING DRAWER- 15
AMP SEE MANUFACTURE SPEC

PROVIDE POWER AND SWITCH FOR GARBAGE
DISPOSAL

RESIDENCE

ARCHITECTURAL BY:

DATE:
3.28.22

SCALE:
1/2"=1'-0"

AREA:
ELECTRICAL
PAGE

E1.1